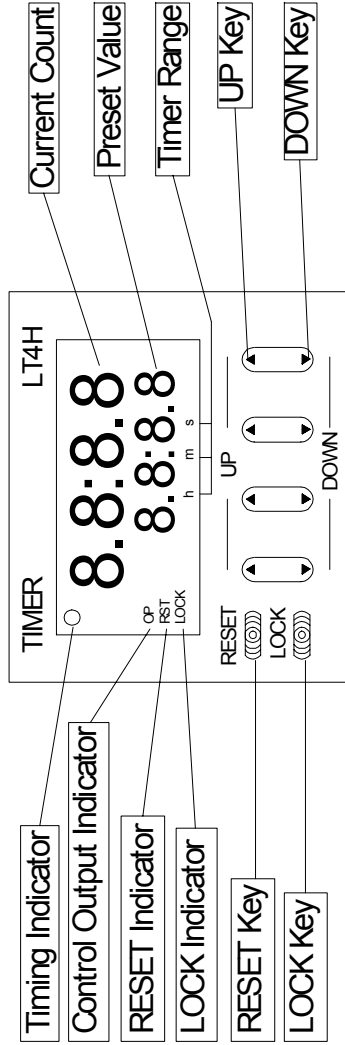
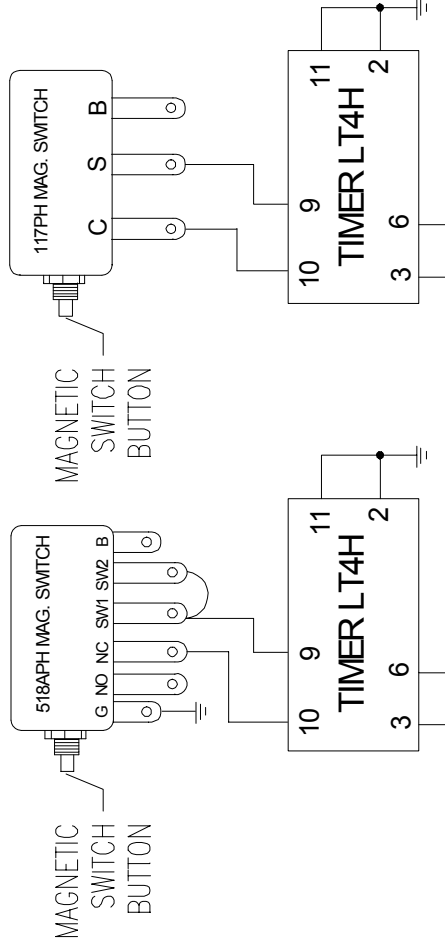


DIAG. 1 - PARTS NAME SET UP FRONT KEY

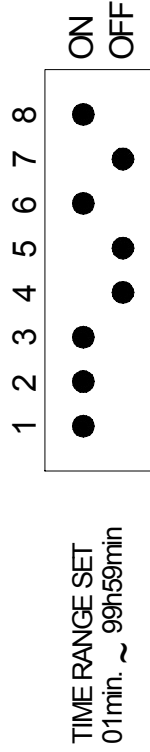


UP KEY: Use to increase preset value at each digit.
 DOWN KEY: Use to decrease preset value at each digit.
 RESET KEY: Use to preset current count & output.
 LOCK KEY: Use to refuse all key operations.

DIAG. 2 - MURPHY PANEL TIMER WIRING



DIAG. 3 - MURPHY PANEL WIRING MODE & TIME RANGE SETTING
 PRESET BY MACQUARRIE FOR PANEL MANUFACTURE.



THESE INSTRUCTIONS ARE FOR MURPHY PANEL APPLICATIONS ONLY.

FOR USE IN ANY OTHER APPLICATION PLEASE READ AND USE THE NAIS LT4H DIGITAL TIMER INSTALLATION INSTRUCTIONS.

TIMER SET & ENGINE START PROCEDURE

Press Magnetic Switch button and hold.

IMPORTANT NOTE Never hold Magnetic Switch button down for any longer than 10 seconds.

Set timer to desired run time on counter (PRESET VALUE DISPLAY)

Start engine.

Release Magnetic Switch button when Oil Pressure needle has left contact.

CURRENT COUNT display will time up until it reaches preset time. Engine will shutdown.

CHANGE RUN TIME DURING ENGINE RUN PROCEDURE

(Engine will keep running during this procedure).

Press and hold reset button. (This will put CURRENT COUNT display back to zero).

Set to new desired run time on counter (PRESET VALUE display).

Release RESET button.

CURRENT COUNT display will start timing up until it reaches new preset time. Engine will shutdown.

No./Assy:	MACQUARRIE CORPORATION PTY. LTD.		
DRAWN	LOREEE	DATE	14/6/02
EKD		DATE	
APPD		DATE	
TITLE		MURPHY PANEL DEFAULT WIRING	
SIZE		DRAWING No.	
SCALE		N.T.S.	
SHEET		TIMER LT4H	